

PRODUCT MANUAL



Welcome!

Welcome to E-TAKE' s family of users. E-TAKE is to produce topnotch superior quality products and services for the benefit of users. Made by professionals and real users, E-TAKE is handed to you knowing it will become not just another scooter but an extension of your body, part of your life. As such, we made an enormous effort to design and manufacture with great attention and care, which we hope you will be able to appreciate. However, being human means we are not perfect and therefore, for the benefit of both users and makers, we urge you to contact us with any remark, idea for a change, complaint and even complements! We want to hear it at all, so please feel free to email or call us. Enjoy your E-TAKE scooter!

TABLE OF CONTENT

PREFACE	4
ABOUT THIS MANUAL	5
BACKGROUND	7
SAFTY	8
OPERATING DEAR DEER	20
TRANSPORTING DEAR DEER	38
TROUBLE SHOOTING	39
MAINTENANCE	39
SPECIFICATIONS	42
LIMITED WARRANTY	43
CONTACT INFORMATION	44

ABOUT THIS MANUAL

Purpose of this manual

This Owner Manual is an essential tool for any user of a mobility scooter. The manual includes usage and operation guidelines, warnings concerning dangers while operating the scooter including when changing from the closed position to the drive position and vice versa, while driving and during transportation of the scooter.

The purpose of the manual is to prepare you and get you acquainted with the product and all its capabilities. The manual is aimed at providing you with all the answers to questions that may arise during the operation and use of the scooter. If you encounter a question for which you have not found an answer, please contact a Tuokang dealer near you or the company's technical support via email or phone call.

Symbols and warning

The warning frame includes information concerning your safety and warnings of possible injuries.

Caution



Caution is intended to draw your attention to a possible risk or damage to your scooter and other properties.

Warning



The warning frame includes information concerning your safety and warnings of possible injuries.

Pinch Point Warning



Pinch Point Warning: A Pinch Point Warning refers to an area where you must pay extra attention to your fingers to be sure your fingers are not pinched between two metal parts.

Users and certified technicians

Warning

Warning

THIS CLAUSE CONTAIN A MUSTREAD INFORMATION CONCERNING USERS AND CERTIFIED TECHNICIAN.

This Owner ' s Manual contains important information for the safe operation and use of this product. DO NOT use this product or any available optional equipment without first reading and completely understanding these instructions and any additional instructional material supplied with this product or optional equipment. If you are unable to understand the warnings, cautions or instructions, contact a healthcare professional, an authorized Tuokang dealer or technical personnel before attempting to use this equipment – otherwise, injury or damage may occur.

SAFETY

Safety highlights

A mobility scooter is not a toy and should not be used by children, unless they are the intended users who comply with laws and regulations and with the minimum requirements specified in the specification section of this Owner ' s Manual.

NOTE

This Owner ' s Manual is complied from the latest specifications and product information available at the time of publication. We reserve the right to make changes as they become necessary or available. Any changes to our products may result in slight variations between the illustrations and explanations in this manual and the product you have purchased.

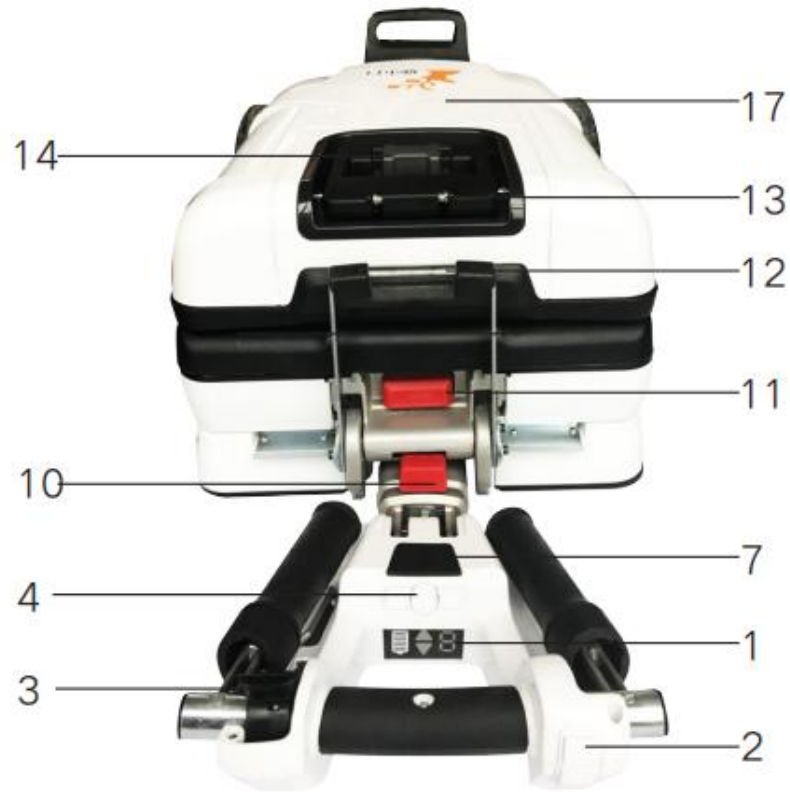
BACKGROUND

This scooter is an advanced–technology Class A mobility scooter, designed for use indoors and on sidewalks. When driving on a pavement you should follow the rules for pedestrians. You should give pedestrians priority And show consideration for other pavement users, particularly those with a hearing or visual impairment who may not be aware that you are there. If you are using a mobility vehicle for the first time, or if it has been a while since you have driven one, you are strongly advised to get some training to ensure that you can steer and control the vehicle properly, especially on uneven surfaces. Your assessment should include

checking your eyesight, reaction time, balance and posture, ability to sit for long periods of time, concentration and ability to get on and off the mobility scooter. You may also want to consider having a regular review of your driving skills. Although in most countries there are no legal eyesight requirements, good vision is important for driving a mobility vehicle safely. You should be able to judge distances, recognize obstacles and hazards, and be able to see pedestrians and other road users. Poor eyesight could be a contributory factor in an accident and could make you liable for a compensation claim. Vision can change with age, you are recommended to have regular sight tests. If you are eligible to be registered as severely sight impaired (blind), you should not drive a mobility scooter as this would put yourself and others at risk. If you are eligible to be registered as sight impaired (partially sighted), you should speak to your optometrist or doctor. If you regularly take medication that makes you drowsy, you should consider whether it would be safe to use a mobility scooter. If you are in any doubt, consult your doctor. You should not use a mobility scooter if you have been drinking alcohol. Mobility scooters can be used on footpaths, pavements, bridleways, and in pedestrian areas and can be used on the road if a pavement is not available, or where it is necessary to cross the road.







- 1.Display
- 2.Reverse
- 3.Throttle
- 4.Speed- On-off Speed+
- 5.Hand Grips
- 6.Driving Console Adjustment Lever
- 7.USB port
- 8.Tiller
- 9.Rod Lever
- 10.Rod Button
- 11.Central Release Button
- 12.Main Handle
- 13.Back Handle
- 14.Back Handle secure lever
- 15.Battery
- 16.Battery release Button
- 17.Back Cover

OPERATING Deerdeer

Deerdeer is very easy to operate; it requires no special skills and can be learned by following the steps described in the following pages and by practice.

Warning

Injury hazard due to improper assembly, disassembly, opening or closing Deerdeer. Ensure that all components in the scooter have been correctly placed before continuing to the next step. Always check that all locked devices are holding correctly.

Opening

1. Make sure your Deerdeer is on flat ground before opening. Make sure you have clearance of 2 meters from the side of the back wheels.

Pinch Point Warning

Operations described below are done near and around pinching points. Be careful and follow instructions to prevent injury. Make sure your fingers are away from moving parts that may be closing gaps while moving.

2. Release the adjustment lever of the handle bar and bring the handle bar to an upright position, then bring the lever back to its secured position (see Figure 4).



Figure 4

3.Press the central release button until it clicks and remains pressed(see Figure 5).

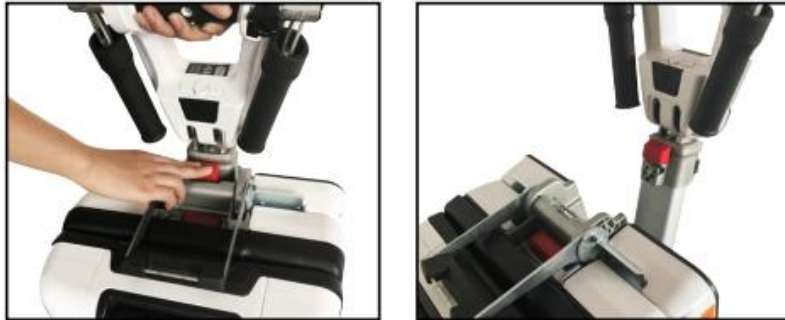


Figure 5

4.Press the rod button and tilt it away from the main Deerdeer body(see Figure 6).



Figure 6

5.Hold Deerdeer with two hands(see Figure 7).



Figure 7

6.Tilt Deerdeer toward the road until the front wheel touches the ground(see Figure 8).



Figure 8

7.Using the main handle, pull the main body away from the rod, thus rolling the back wheels away from the front wheel(see Figure 9).



Figure 9

8.Gently move the handle down until Deerdeer is flat as shown in Figure 9(see Figure 10).



Figure 10

9.Place handle in the designated recess until it clicks and locks in place(see Figure 11).



Figure 11

10.Lock the rod in upright position by pushing the front lever down until it clicks and locks in place(see Figure 12). In case the front lever require too much force to operate, you should apply horizontal pressure on the main handle towards the front of the scooter. This will release the pressure on the front lever and will make it easier to open.



Figure 12

11. Place one hand on the tiller and with the other hand release the secure lever of the back handle and bring the handle to upright position at 90 degrees (see Figure 13).

Using the handle, pull the back of the chair backwards until it clicks and locks in place (see Figure 14).

NOTE

For proper operation please do not flip the handle to 180 degrees from closed position. If you did and you are unable to lift the chair backwards, return the handle to its original position and try again.



Figure 13



Figure 14

12. Continue using the handle for pulling up the chair until it clicks and locks in place (see Figure 15).

Do not seat on it, before the seat is fixed.

Warning



Figure 15

13. Open both sides of the handle grips (see Figure 16).



Figure 16

Adjusting for maximum comfort

Several adjustments can be made for maximum comfort. Some adjustments can be made by the user, while other adjustments must only be made by a certified technician. The adjustments that can be made by the user are detailed in this section.

Pinch Point Warning

Operations described in this chapter are performed near and around pinching points. Be careful and follow instructions to prevent injury. Make sure your fingers are away from moving parts that may be closing gaps while moving.

Adjusting Driving Console height

Use the rod lever to adjust the height of the driving console at your convenience. Bring the lever back to the secure position once you are done(see Figure 17).

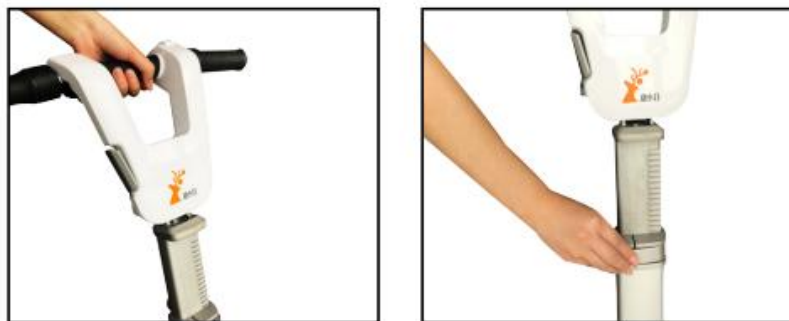


Figure 17

Adjusting Driving Console angle

Deerdeer's Driving Console can be adjusted to your comfort in a variety of angles. To adjust the Driving Console you should first be seated on your mobility scooter:

1. Hold the Driving Console in one hand and release the adjusting lever using the other hand(see Figure 19).
2. Adjust the Driving Console angle so you can reach and hold it comfortably with a clear view of the display area.
3. Tighten the adjustment lever when you are done.



Figure 18

Seat height adjustment

Although Deerdeer's seat is thin and stylish, it was designed to provide comfort and safety and can be adjusted according to user's preferences. The seat mechanism can be locked at one of three fixed heights. To adjust seat height please follow the following steps, no tools needed:

1. Deerdeer has to be in opened position in order to adjust seat height. Lift the seat to upright position, locate the seat height adjustment cover at the seat base right under the seat pivots and remove it(see Figure 20).



Figure 19

Warning

When the seat is in its highest position, the scooter will be more inclined to tip over.

2. Under the cover you will find a metal bracket between your fingers and lift it out. Remember the bracket position to make it easier to put it back in place again.

3. Once the bracket has been removed you should be able to remove the bulky metal pin (located in one of the three adjustment holes) holding the seat in its place. Remove the pin while holding the seat with your other hand (see Figure 21).

4. Now you can adjust the seat to any of the four hole heights and reinsert the pin to hold it in place.

5. Reinsert the metal bracket and the cover.

6. Insert back into slot and push down, until it clicks and the back is locked in holder.

Driving Console

The Driving Console (your scooter's dashboard) contains all the controls and display needed for operating your mobility scooter while driving.



Figure 20

ON/OFF and speed control buttons



Figure 21

A. The On/Off button is located at the center of the Driving Console below the display panel. To turn Deerdeer on, press and hold the button until Deerdeer starts.

B. The two buttons on the sides of the ON/OFF switch, marked with "+" and "-", are your speed limit control. Along with the number shown on the display panel, they allow you to set the maximum speed Deerdeer will develop at full throttle. While Deerdeer is not moving, click the "+" button to increase the speed and the "-" button to decrease the speed.

Warning

Warning: When driving in crowded places and near obstacles, use extra care and reduce the maximum speed to a limit allowing you to control your mobility scooter without presenting a risk to other people and to yourself.

Display panel



Figure 22

Battery level meter – When Deerdeer power is ON, the battery meter indicates the approximate battery charge level. As with all Li-ion batteries, the charge level indication

is accurate only when the battery is fully charged. All other indications are approximate and intended to give you a rough idea of the battery charge level. Please refer to the “Specification” chapter in this Owner’s Manual for more information on your battery range.

Caution

Note:Your scooter will automatically turn itself off if the battery output falls below operation voltage.

Direction mode – Deerdeer can drive both forward and backward. The current driving direction is shown on the display panel by an arrow pointing forward or backward, depending on user’s selection. To switch the driving direction press on the direction button located near the left hand grip.

Throttle

The throttle is used for driving and controlling the driving speed. Place your thumb on the throttle lever and press it down to accelerate. To decelerate, release the throttle lever to your level of comfort. To bring the scooter to a complete stop simply remove your thumb from the lever which will set the lever to its “off” position, bringing the scooter to a halt after 1.8 meter.



Figure 23

Reverse and horn buttons

A. Deerdeer is equipped with a driving direction button. Press on the button to change the driving direction. Once the driving direction has changed, Deerdeer will sound a single beep when in forward driving mode, and a double beep when in reverse driving mode. In addition, a large arrow on the display panel will indicate the current driving mode. When Deerdeer is turned on it is always in Forward driving mode.

B. Press the horn button to sound the horn. Always use the horn when needed to prevent accident or injury. (see Figure 24)

Warning

Warning:Always bring the mobility scooter to a full stop before changing the driving direction.



Figure 24

USB Charging Port

Deerdeer is equipped with a general USB charging port providing up to 1.2A charging current. If an error occurred, the port is disabled and the scooter will operate as normal. The error will be reset after restarting of the scooter's controller (power off/on cycle).

Handle bar grips

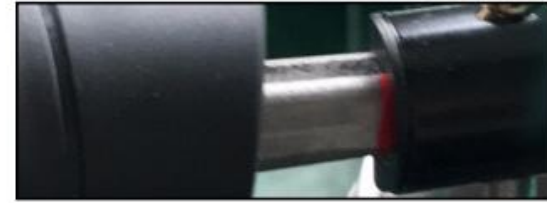


Figure 25

There are two grips on the handlebar, one on each side.

To change the grips from folded position to drive position simply lift the grip around its pivot and it will lock itself in the open position. To fold it back again (only when you are about to fold Deerdeer), simply pull the grip away from the handlebar and down to an angle of nearly 90 degrees where it will automatically lock itself in the new position.

Caution

PINCH POINT: Be careful of pinch points near the grip hinge. To prevent injury keep your fingers away from metal parts and hold the grip and the handlebar only in non-exposed areas covered with plastic and rubber.

Getting on Deerdeer

1. Verify that the scooter is turned off.
2. Verify that the scooter is fully opened and secured. See the “Opening” section of this Owner’s Manual.

Turning DeerDeer on

Press and hold the “On” button to turn DeerDeer on. All lights will come on momentarily. Carefully place one foot on the approximate center of the deck and seat yourself comfortably and securely on the seat.

Getting off Deerdeer

1. Verify that the power is turned off.
2. Carefully place one foot on the ground, transfer your weight to that leg, and slowly come to a standing position.
3. Step away from the scooter.

Driving

Note

INSPECTIONS PRIOR TO USING YOUR SCOOTER:

1. Please check that the battery is in its place and verify it is locked and not protruding off the surface.
2. Please check that the battery is fully charged or has enough capacity to carry you to your desired destination.
3. Verify that the freewheel lever is in locked position. Verify that all locking parts are in fully opened position and locked in place.
4. Adjust driving direction.

Typical display after turning on, see Figure 26.



Figure 26

1. We recommend that you select a maximum speed setting (using the “+” and “-” buttons near the On/Off switch) at which you feel comfortable, safe, and in control of your scooter.
2. Make sure that you are seated safely and properly on your DeerDeer.
3. For your first driving sessions, make sure that your DeerDeer starts out on a level surface and that you will continue driving on a level surface.

Forward driving

1. Place your hands on the handgrips, use your right finger to adjust speed, and press throttle lightly to move forward.
2. Increase the pressure applied by your thumb to increase your speed.
3. To stop DeerDeer, release all pressure on the throttle. The throttle will automatically return to the upper (off) position and your scooter will come to a gradual stop.

Reverse driving

1. DeerDeer stop driving, use one of your left fingers to press the reverse button located on the left side of the Driving Console about 3-5 seconds.
2. When you hear Beep, it shows DeerDeer goes to Reverse driving. Use your right thumb to operate the drive throttle. Press the throttle lightly to move backwards.
3. Increase the pressure applied by your thumb to increase your reverse speed.
4. To stop DeerDeer, release all pressure on the throttle. The throttle will automatically return to the upper (off) position and your scooter will come to a gradual stop. You should know that for safety reasons DeerDeer's speed in reverse is slower than the maximum speed set on the speed control dial.

Stopping

Just let go of the drive throttle, which will automatically return to the upper (off). The scooter automatically brakes using the regenerative brake. This will be followed by entering the scooter into “parking” mode using the electro-mechanical brake.

Emergency braking

In case you must stop and you have released the drive throttle but your scooter continues to move, press the On/Off switch until the scooter turns off and stops.

Steering

Steering your DeerDeer is easy and intuitive.

With both hands on the handgrips of the tiller, turn the tiller to the right or to the left to change the moving direction accordingly.

Make certain to maintain sufficient clearance when turning your scooter so that the rear wheels will clear any obstacle.

Warning

Warning:Turning too sharply around a corner can cause the scooter to tip over. Avoid this danger by steering a wide arc around corners and obstacles. Also, to avoid the risk of tipping over, reduce speed before negotiating any turns.

Driving on slopes

Warning:Stopping distance on slopes can be significantly greater than on level ground.

More and more buildings have ramps with specified degrees of inclination, designed for easy and safe access. Some ramps may have switchbacks(180 degrees turns) that require you to have good cornering skills on your DeerDeer.

- 1.Proceed with extreme caution as you approach the downgrade of a ramp or other incline.
- 2.Take wide swings with your DeerDeer around any tight corners. If you do that, the scooter' s rear wheels will follow a wide arc, not cut the corner short, and not bump into or get hung up on any railing corners.
- 3.When driving down a ramp, keep DeerDeer' s speed set to the slowest speed setting to ensure a safely controlled descent.
- 4.Avoid sudden stops and starts.

When climbing an incline,try to keep Deerdeer moving, If you must stop, start up again slowly, and then accelerate cautiously. When driving down an incline, do so by adjustment the speed to the slowest setting and driving in the forward direction only. If your scooter starts to move down the incline faster than you anticipated or desired,

allow it to come to a complete stop by releasing the throttle. Then push the throttle forward slightly to ensure a safely controlled descent.

Warning:When climbing an incline, do not zigzag or drive at an angle up the face of the incline. Drive your DeerDeer straight up the incline.This greatly reduces the possibility tipping over or falling. Always exercise extreme caution when negotiating an incline.

Warning:Do not drive your DeerDeer across the side of an incline or diagonally up or down an incline; Avoid stopping, as much as possible, while driving up or down an incline.

Warning:You should not travel up or down a potentially hazardous incline(i.e., areas covered with snow, ice, cut grass, or wet leaves).

Warning:Even though your DeerDeer is capable of climbing slopes greater than that illustrated in Figure 27, do not, under any circumstances, exceed the incline guidelines or any other specifications presented in this manual. Doing so could cause your DeerDeer to become unstable, resulting in personal injury and/or damage to your DeerDeer.

Warning:Any attempt to climb or descend a slope steeper than what is shown in Figure 27 may make DeerDeer unstable and cause it to tip over, resulting in personal injury.



Figure 27

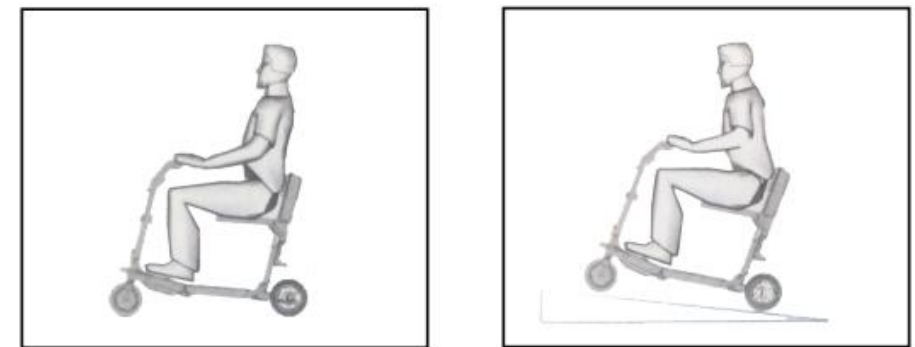


Figure 28

Folding(closing)

1. Make sure DeerDeer is on flat ground before folding it.

Pinch Point Warning

Operations described in this chapter are done near and around pinching points. Be careful and follow instructions to prevent injury. Make sure your fingers are away from moving parts that may be closing gaps while moving.

2. Fold both sides of the handle grips (see Figure 29). Pull out horizontally the handle grips till you see the RED LINE, then fold down.



3. Release the secure lever of the back handle and bring the handle to 90 degrees position. Allow the seat to slide down until it clicks in place (see Figure 30 & Figure 31).



Figure 30

4. Make sure the seat slide down in place (see Figure 31).



5. Push the back of the chair forwards until it clicks (see Figure 36).



Figure 32



Figure 33

6. Use one hand to keep the rod upright. Using your other hand, release the front lever. In case the front lever requires too much force to operate, you should apply horizontal pressure on the main handle towards the front of the scooter. This will release the pressure on the front lever and will make it easier to open. Switch hands. Use one hand to keep the rod upright and use your other hand to lift the main handle (see Figure 33).

7. Using the main handle pull the center upwards and towards the rod until it clicks and locks in place (see Figure 34).



Figure 34

Pinch Point Warning

Be careful not to pinch your finger between the chassis. This area is a pinch point and requires your full attention.

8. Use the rod lever to adjust the height of the handle bar to the lowest position and bring the lever back to the secure position (see Figure 35).



Figure 35

9. Release the adjustment lever of the handle bar and bring the handle bar to a horizontal position. Then bring the lever back to secure position (see Figure 36).



Figure 36

Battery and charger

DeerDeer's charger is a small yet smart and powerful charger with the ability to connect to any electrical grid rating 110VAC-240VAC. It is fully approved and safe to use.

1. When connecting the charger, connect the DC charging cord to the battery charge plug before connecting the charger AC cord to the electrical outlet.
2. When disconnecting the charger, always do so in reverse order of the connecting procedure.



Figure 37



Figure 38

Installing the battery

To install the battery, insert first the back end of the battery and then push the front until the battery clicks and locks in place(see Figure 39).



Figure 39

Removing the battery

To remove the battery from DeerDeer, press the release button and pull the battery out(see Figure 40).



Figure 40

Warning

Warning

- 1.New battery MUST be fully charged prior to initial use of DeerDeer. ALWAYS fully charge new battery before initial use or battery life will be reduced.
- 2.As a general rule, you should charge your battery at 60% of full charge before placing in storage for long period of time.
- 3.Only use a charger approved by Deerdeer.
- 4.Use of improper extension cord for the charger could result in risk of fire and electric shock.

Deerdeer' s battery holds a substantial amount of power. Shorting of the terminals can result in burns or other injuries and in damage to the battery and to the electronic components of your scooter. Always use care and caution when handling the battery.

Charging the battery

- 1.The battery should not be emptied. To maintain good battery state and maximize its life span always charge the battery when the battery meter reaches 2 green lines.
- 2.Before placing the battery for a long period of time make sure to charge it at about 60% of full charge.
- 3.Connect the charger to the electric socket. The Green LED should turn green to indicate the charger is properly connected to the socket.
- 4.Connect the other end of the charger to Deerdeer ' s battery. The charger LED will turn red to indicate the battery is not fully charge and that charging is taking place.
- 5.When the battery is full charged, the LED will turn green. This may take up to3-5 hours. Once charging is complete, disconnect the charger from the wall socket and then disconnect the battery from the charger.

Noted:Battery can be charged either when connected to Deerdeer o r out of Deerdeer.

Maximizing battery ' s life time

Warning:Always keep batteries in cool dry conditions to prevent damage to the battery and surrounding equipment.

TRANSPORTING Deerdeer

- 1.Deerdeer can be effortlessly transported in many types of vehicles, on land, sea or by air.
- 2.Transport of Deerdeer on commercial aircraft is subject to federal regulations and airline policy. Please consult your airline prior to your flight to ensure your Deerdeer and its lithium-ion battery is permitted.

To transport Deerdeer:

For safety reasons, remove the battery and place it in a safe location.Make sure it is fully closed.To prevent injury and damage, secure Deerdeer in a way that will prevent it from moving around or shaking.

Warning



- 1.If your scooter and its components are not properly and securely stowed, the scooter or components may shift around while driving causing injury or damage.
- 2.If the scooter is transported in a vehicle when fully assembled and in open position, no one should sit on the scooter during loading and transport.
- 3.If you use an external lifting system, be sure to secure your Deerdeer as it could fall off the lift.

Noted : When transporting Deerdeer, make sure it is always in an environment within the allowed specifications for humidity and temperature.

TROUBLESHOOTING

If your scooter does not operate:

1. Make sure the charger is not connected to your scooter.
2. Check the battery, is it charged? If you are not sure, you can connect it to the charger and wait for the green LED.
3. Make sure the battery is properly placed in its battery housing on the scooter, and that there is no foreign material such as paper or dirt interfering with the electrical contact between the battery and its connector.
4. Try to turn the scooter on by pressing the On/Off button for at least 2 seconds. If the scooter does not turn on please contact an authorized Deerdeer dealer.

MAINTENANCE

Deerdeer' s expected service life is 6 years and it will extend much longer provided care and maintenance procedures are carefully followed.

Please follow the maintenance procedures whenever needed or at least once a year.

Replacement parts are available from Deerdeer and authorized service facilities.

Cleaning, body care

Deerdeer' s body is made of ABS parts, a durable plastic with integrated paint. To help Deerdeer retain high gloss you may clean it using clean cloth moistened with water.

Warning

Warning

Never soak your scooter in any liquid. This may cause personal injury and/or damage to your scooter.

Wheels and Tires

Your scooter is equipped with one front motor with solid tire and two rear wheels with solid tires. This means that there is no air in any of the tires. The tires are filled with foam and you will never have a flat tire even if you puncture the tire. If for any reason there is a need to replace a tire due to erosion or damage, please contact an authorized Twirl Motor dealer.

Lubrication

There are two lubrication areas where a light spray of silicon lubrication should be applied every six months or more rapidly if opening and closing Deerdeer becomes more difficult to perform (you may use other light lubrication as long as they are not sticky or corrosive on aluminum and plastics).

Lubrication points are shown in Figure 41:

- 1.Seat post including tracks.
- 2.Wheel shafts.

Clean the areas to be lubricated with clean cloth leaving no fibers,sand or dust on the scooter. Once you are done lubricating and testing the scooter for proper and easy operation, clean the entire surrounding parts from lubricant residues.

All of the bearings on your Deerdeer are permanently lubricated and sealed and therefore no lubrication is required.



Figure 41

Battery & charging

Your scooter is be equipped with Li-ion battery, which does not have a “memory” issue and therefore it is not necessary to completely discharge the battery before recharging it.

If you are not going to use your Deerdeer for an extended period of time, charge the batteries to 60% of full charge before storing your scooter. The batteries can be left unmaintained for up to 6 months if they are properly charged and kept at room temperature approximately 22 ° C (-72 ° F).

If you have not used your scooter for more than one month, make sure that you charge the batteries on the night before you are going to use your scooter. This will ensure that you start operating your scooter with a fully charged battery.

Following the procedures set out in this Owner ' s Manual will extend the life of your batteries.

If electrical terminals on the scooter become corroded, they need to be cleaned by a certified Deerdeer technician.

If battery terminals become corroded, it has to be replaced with a new battery.

Charging problems

If batteries fail to charge within 12 hours:

1. Check the battery connections.
2. It may be necessary to have the batteries checked and perhaps replaced by an authorized dealer.
3. It may be necessary to have the charger tested.

Warning

Do not leave the battery pack and charger plugged in for more than 12 hours. Damage to the battery pack and a hazardous condition may result.

Warning

FIRE HAZARD! Do not cover the battery charger and ventilation slot while charging your battery. Only use the battery charger in well-ventilated areas

Warning

Always protect batteries from freezing temperatures and never charge a frozen battery. This damages the battery and can cause personal injury.

Spare parts:

If spare parts are required, can be purchased directly from Deerdeer or from a local representative.

Storage:

If you plan to not use your Deerdeer for an extended period, it is best to:

Remove the battery pack from the scooter.

Store your scooter in ambient, dry environment.

Avoid storing your scooter where it will be exposed to temperature extremes.

SPECIFICATIONS

Deerdeer Mobility Scooter Type

LXB01W36,W stands for white,36 stands for 36V lithium-Ion battery and by this analogy.

Speed

Deerdeer ' s maximum speed (limited by software) is 10 km/h (5mph). Maximum driving speed can be set to one of the presets by simply clicking a button and watching the indication on Deerdeer ' s clear view display.

Maximum incline

Maximum incline $\leq 12^\circ$

Ground clearance

Deerdeer ' s minimum ground clearance is 0.17 m²

Weight Capacity

100kg

Dimensions As below

Part	Height mm	Lenght mm	Width mm
Trolley mode	700	430	400
Drive mode	980	1230	585

Front wheel drive motor

To allow smooth and continues drive over many years and large distances, we developed a unique, fully customized, brushless, permanent magnet DC motor, combining solid core and powerful gear along with robust braking mechanism. Via sophisticated software algorithms the motor utilizes modern reverse charging techniques for deceleration and stopping providing smooth driving experience.

Tires

PU filled non-pneumatic tires.

Battery

Deerdeer uses a powerful, yet compact, lightweight advanced 36Volts or 48 Volts lithium-Ion battery. Weighing only 2 kg, the battery allows for more than 25km of continuous driving while requiring only 4 hours (on average) to fully charge. You can charge Deerdeer on-board and off-board, meaning that you can (but do not have to), take the battery off the scooter in order to charge it. Removing the battery is as easy as pressing a button. Reinstalling the battery is as easy as putting it back in place.

LIMITED WARRANTY

Deerdeer warrants this product to be free from defects in materials and workmanship for the periods stated below under each limited warranty section.

If, within such warranty period, any such product shall be proven defective, such product shall be repaired or replaced at Deerdeer ' s discretion. This warranty does not include any labor or shipping charges incurred in replacement part installation or repair of any such product. Deerdeer ' s sole obligation and your exclusive remedy under this warranty shall be limited to such repair and/or replacement.

For warranty service, please contact the authorized Deerdeer dealer where you purchased your Deerdeer product. In the event you do not receive satisfactory warranty service, please write directly to Deerdeer at the address on the back cover, provide authorized Deerdeer dealer's name, address, date of purchase, indicate nature of the defect and, if the product or defect part carries a serial number, indicate the serial number. Do not return products to our factory or shipping center without our written prior consent.

THREE-YEAR LIMITED WARRANTY

Structural frame components, including: mobility scooter chassis, steering mechanism, seat mechanism, rear wheels.

ONE-YEAR LIMITED WARRANTY

Drivetrain, including: battery, charger, motor, front wheel fork and brake.

Batteries are covered by a one year warranty from the original manufacture. Gradual deterioration in battery performance due to not following usage instructions specified in owner ' s manual or worn out through heavy use is not covered.

WARRANTY EXCLUSIONS

—ABS plastic

—Seat upholstery

—Tires and tire tubes

—Repairs and/or modifications made to any part of the product or accessories without specific and prior written consent

—Damage caused by: abuse, misuse, accident, improper operation, maintenance, or storage, or use other than normal

—If the serial number has been removed or defaced

Such evaluation will be solely determined by E-TAKE. E-TAKE shall not be liable for any consequential or incidental damages whatsoever. There is no other express warranty. Implied warranties, including those of merchantability and fitness for a particular purpose, are limited to one (1) year from the date of original purchase and to the extent permitted by law. Any and all implied warranties are excluded. This is the exclusive remedy. Liabilities for consequential damages under any and all warranties are excluded.