



## JT-A/S6-PRO Using manual



Light up Your Games

# Catalog

P2 Standard Accessories & Technical Parameters

P3-P4 Installation

P5-P6 Function Introduction

P7-P10 Fault handing and parts replacement



## Technical Parameters

G.W.: 9.8 KGS

N.W.: 6.7 KGS

Packing Dimensions: L88\*W40\*H40 CM

Rated Voltage: 100-220V

Rated Power: 24W

Rated Frequency: 50/60HZ

Spin: Topspin, backspin, non-spin, left and right sidespin

Serving Frequency: 35-75/min

Serving speed: 4-40m/s

Point of fall: Random

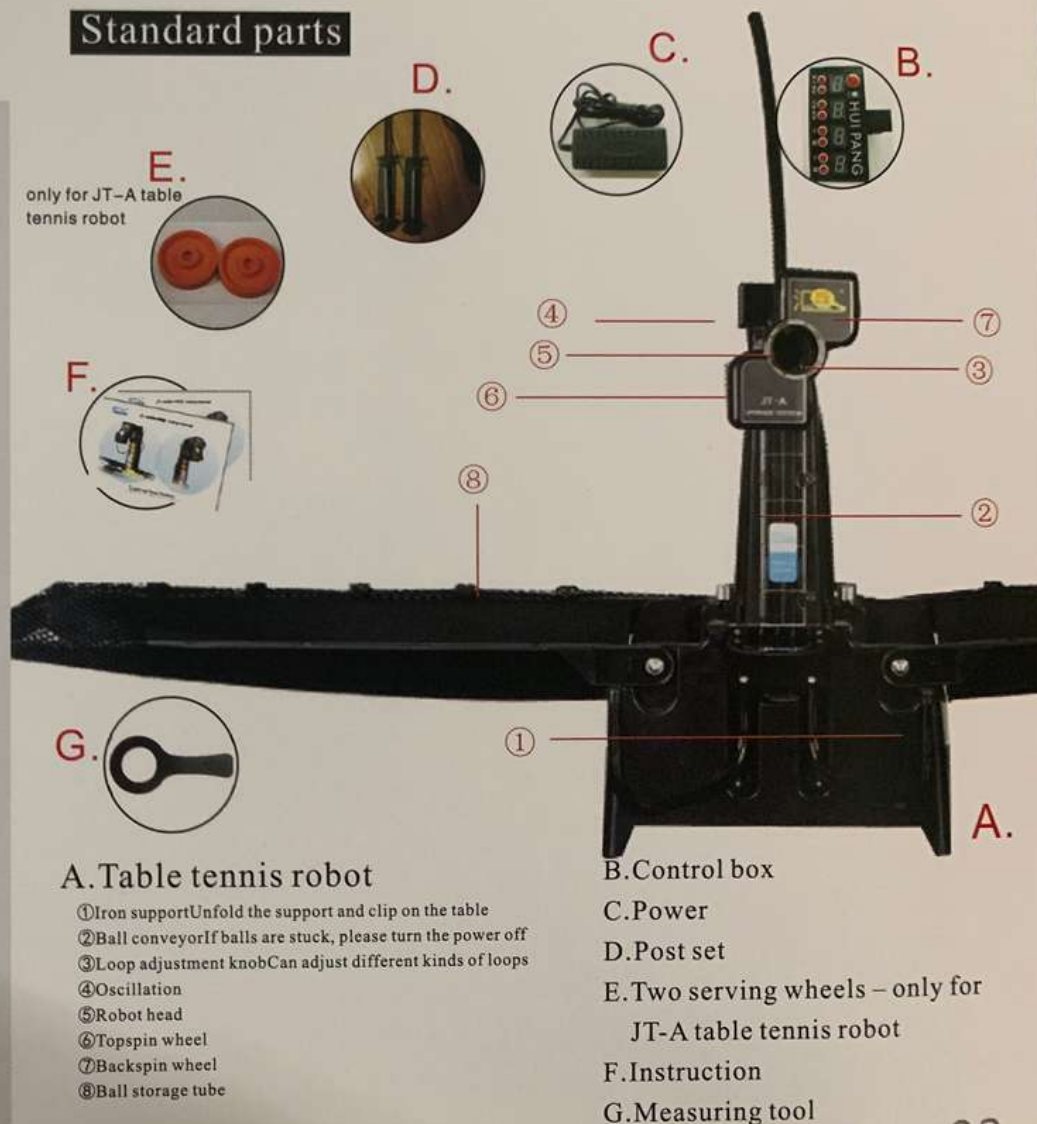
Can serve 9 kinds of spin balls

Can be up and down to adjust the angle of serving ball

Can be left and right to adjust the angle of serving ball

Can serve balls automatically without picking up

## Standard parts





## Installation

①



②



③



④



## Installation

⑤



⑥



⑦



⑧





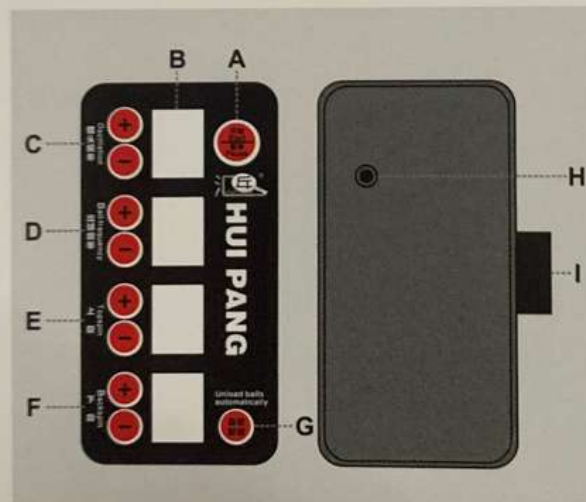
## Function Introduction

After installing the robot and control box, clip the control box on the side of table. For easy adjustment, please place it on the left of table when you play with right hand or place the otherside when play with left hand. Plug in signal line and power line, it is the best plug with switch outlet. Rev it up to warm the engine for a while at first when you play. You can adjust the robot with different mode according to your favor. When you adjust its robot head, you must stop it.

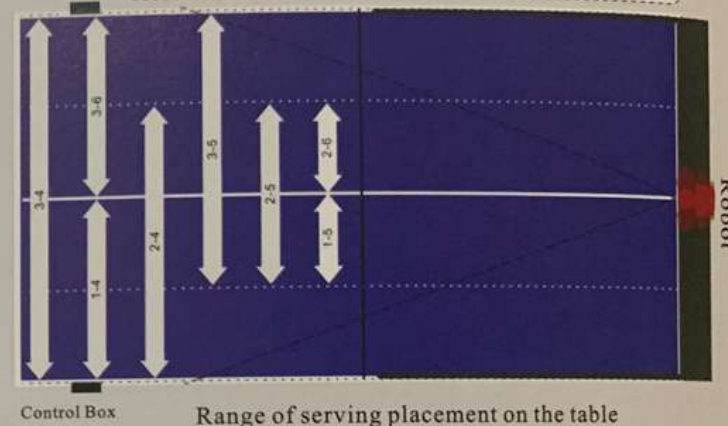


### Control panel

- A、Start/Pause: Control the machine start or stop work
- B、Digital Screen: Shows related data
- C、Oscillation Speed: Shows the adjustment of oscillation speed, + is increase, - is decrease
- D、Serving Frequency: Shows the adjustment of serving frequency, + is increase, - is decrease
- E、Top-wheel Speed: Shows the top-wheel speed, + is increase, - is decrease
- F、Bottom-wheel Speed: Shows the bottom-wheel speed, + is increase, - is decrease
- G、Supply Jack
- H、Fixed clip
- I、Robot Connection Jack



**Tips:** When the top and bottom lever both are adjusted to end (1 & 6), it will have fixed point.  
When the top and bottom lever are adjusted together (3 & 4), it will have full range oscillation.



## Oscillation

Different location of adjusting lever can serve different range of ball:

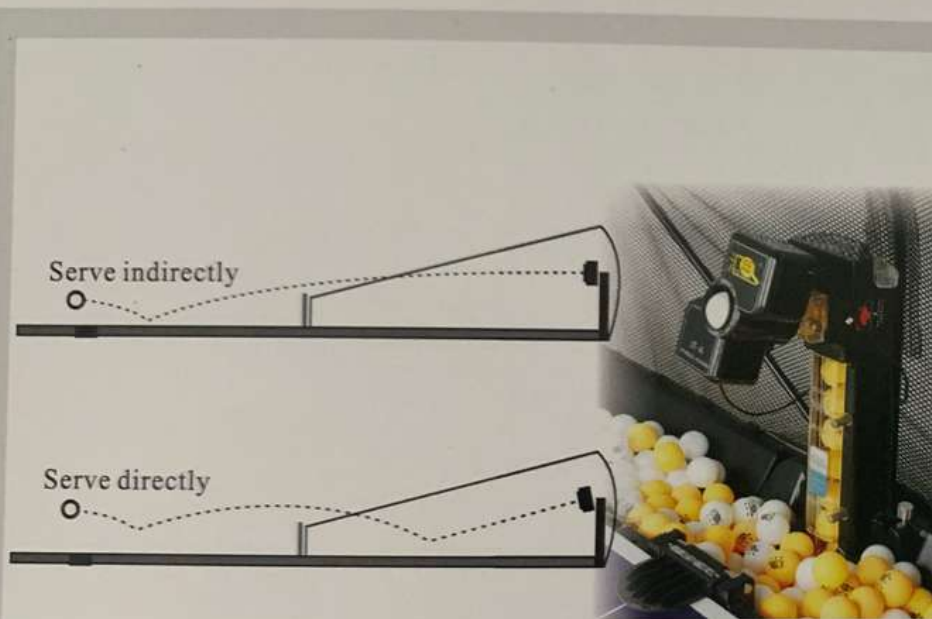
- 3-4: Full range of table
- 3-5:  $\frac{1}{4}$  left side of table
- 2-4:  $\frac{1}{4}$  right side of table
- 1-4: Right half of table
- 3-6: Left half of table
- 2-5: Middle of table
- 1-5:  $\frac{1}{4}$  right middle of table
- 2-6:  $\frac{1}{4}$  left middle of table
- 1-6: Fixed point



There are two adjust levers behind robot head, which are used to change the oscillation range. Each of them has three positions. Different position combinations give different oscillation range.

Do not move or adjust the robot head, when it is working.

## Function

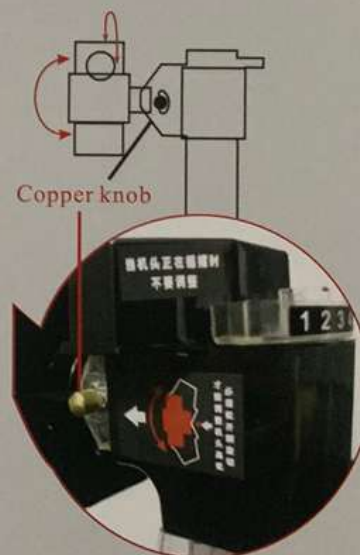


## Server Type Drawing

Serve type: Can serve ball directly and indirectly

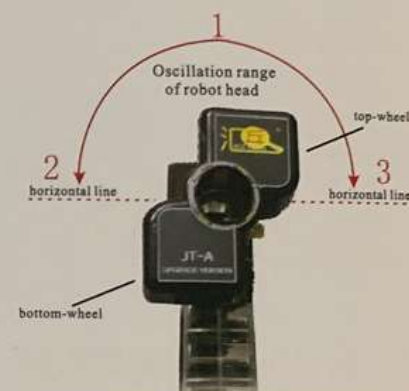
Indirect type: With a proper speed and spin, it is much more suitable for beginner to practice different skill of serving and returning ball.

Direct type: Compared with indirect type, it is much stronger on its speed and spin. At a proper speed and spin, it can give loop, smash and lob etc. It is suitable for daily practice.



Must loosen the copper knob, when you adjust the elevation of robot head.

No adjustment, when it is working



Robot can serve 42 spin ball and one non-spin. The head can oscillate between 180 angles (horizontal line).

1 Position: The rotation of top-wheel is top spin, of the bottom-wheel is under spin. With the same position is the non-spin.

2 Position: The rotation of top-wheel is left spin, of the bottom-wheel is right spin. With the same position is the non-spin.

3 Position: The rotation of top-wheel is right spin, of the bottom-wheel is left spin. With the same position is the non-spin.

Adjust two wheels and speed between 1 and 2 or among 1 to 3, can combine different kind of spins.



## Fault handing

Fault phenomenon	Failure cause	Treating method
Plug in with no reaction	Power failure	Replace power
	Not well plug in	Re-plug in
Balls are not out	Ball groove is dirty	Remove cover and clean groove
	Balls are broken, dirty or not standard	Replace
	Motor of serving ball is broken	Replace
	Gear of serving ball is broken	Replace
Serve ball weakly	Motor of serving ball is broken	Replace
	Power is not well connected	Re-plug
	Line of serving ball motor is disconnected	Re-plug
No oscillation	Motor of oscillation is broken	Replace
	Oscillation gear box is broken	Replace
	Power is not well connected	Re-plug
	Oscillation motor is disconnected	Re-plug
Oscillation range is small	Adjusting lever is set incorrectly	Reset
Start and speed button no reaction	Control box is broken	Replace

## Special attention

- Please use the standard 40mm ball. You can choose Huipang balls, double fish training balls or other more than one star ball. Please don't use the balls that are too soft or irregular to avoid clamping balls.
- Please clean the new balls with clear water and dry them before you use them. And clean the balls and the ball groove regularly to keep robot clean and reduce the failure.
- Remove balls when it is clamp, then check parts of sending balls and clean ball groove.
- If you don't use robot for a long time, please clean it up and with good storage bag.





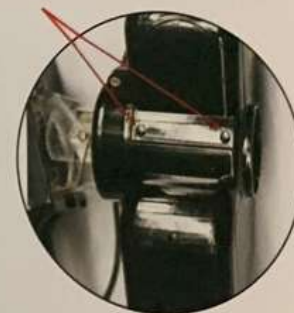
## Exchange accessory



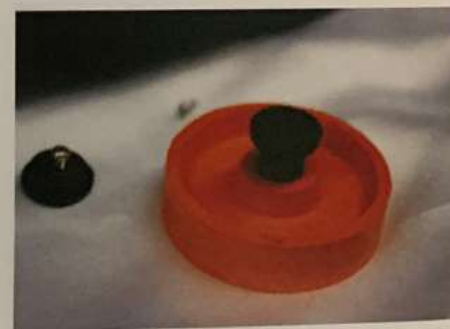
In the case the serving ball wheel is not working and not deliver balls, after troubleshooting, might you need to exchange the motor. In the case that the serving ball wheel is damaged or out of shape, might you need to exchange the wheel.

### A. Exchange serving ball wheel

- ① Check which serving ball wheel is damaged.
- ② Disassemble 2 screws from side board.



- ③ Disassemble the screw from the serving wheel, take out the damaged wheel.



- ④ Take a new wheel, and put it inside follow the process before.

## Exchange Accessory

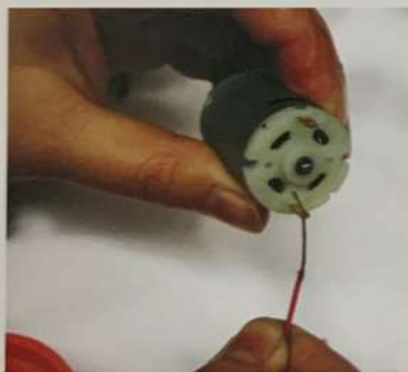
### A. Exchange motor



- ① Check which motor is damaged. After confirmed, disassemble the serving ball wheel first.
- ② After taking out the wheel, disassemble two screws. Then disassemble screws of motor cover, and take out the exchange motor.



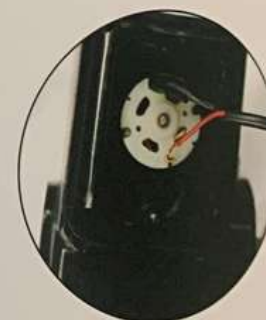
- ③ Cut the positive and negative line from motor.



- ④ Prepare a new motor, the red line connects the positive pole of motor, and the black line with its negative pole.



- ⑤ Please using insulating tape to twist positive and negative line to avoid the touch.



- ⑥ Put it inside follow the process before.



## Exchange accessory



For prolonging its service life, please use robot in clean environment, clean the dust and wash the balls in certain time.

- ① When robot stop sending balls, please check all kinds of lines are well connected. Then adjust 'Top spin' and 'Back spin' button more than 1 to check if the robot working or not.
- ② If not, please exchange the sending ball motor. Disassemble the ball cover first.



- ③ Disassemble screws from the fixed sending ball plate.



- ④ Disassemble two screws from the back of plate.



- ⑤ Install a new motor and pay attention to its positive and negative pole. Using P09 Exchange motor as a reference.