

# Installation Instructions

## 1: Accessories



Screws



Three-in-One Fittings



Quiet Rail



Hinges



Handles



Shelf Pins



Angle Iron



Foot Nails

## 2: Steps



**1:** For the small holes on the boards, insert the particles first and then tighten the screws.



**2:** Connect the front panel and back panel of the long side cabinet, and tighten the three-in-one circular buckle.



**3:** Pay attention to the orientation of the long side cabinet; do not install it in reverse. Install it according to the purchased orientation; the picture shows the right side cabinet.



**4:** Install the vertical board of the long side cabinet, paying attention to the direction of the guide rail.



**5:** Install the top board of the long side cabinet, align the three-in-one long screw with the holes on the board. Tighten it with the circular buckle.



**6:** Connect the side cabinet side panel and the top board, ensuring that the three-in-one long screw faces outward.



**7:** Tighten all the three-in-one circular buckles inside the cabinet, then turn the long side cabinet upside down.



**8:** Install the skirting line, secure it with the three-in-one fitting, fix it on the long side cabinet with angle brackets and screws, and then turn the long side cabinet back upright.



**9:** Install the drawer frame and secure it with the three-in-one fitting.



**10:** Secure the frame, ensure the drawer bottom board is flat, and tighten the four sides with screws.



**11:** There are holes on the side panels; insert the shelf pins into them and place the shelves.



**12:** Install the desktop support bracket, fix it with the three-in-one fitting, and secure it on the top board with angle brackets and Zigong screws.



**13:** Connect and secure the long screws on the side cabinet panel with the holes in the long pull plate.

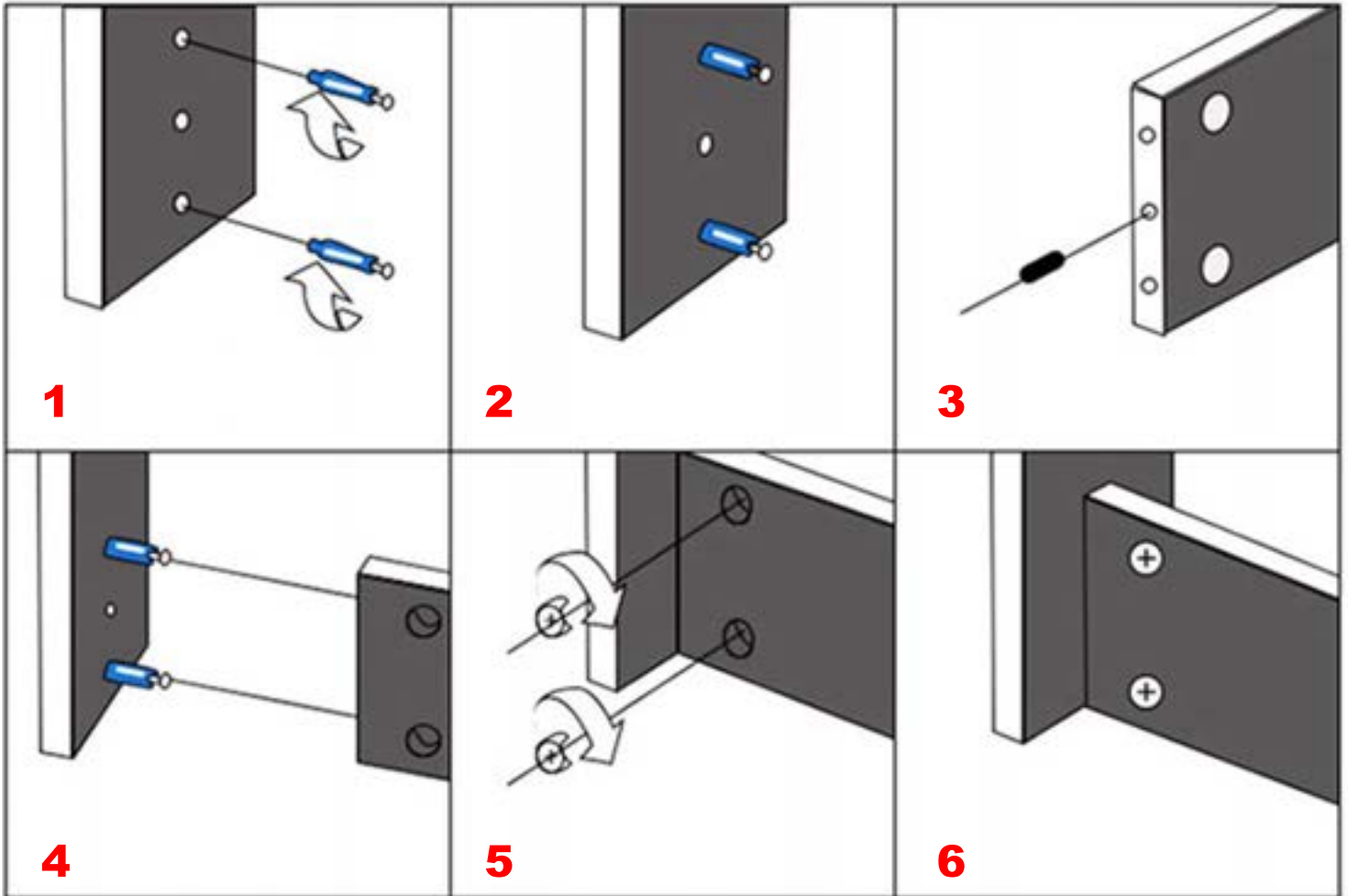


**14:** Hammer the foot nails into the bottom of the footboard, connect them with the long pull plate, and secure them with the three-in-one fitting. Place the desktop flat.



**15:** Secure the bottom of the desktop with angle brackets and Zigong screws.

## Detailed Installation of the Three-in-One Fitting:



**1:** First, use a screwdriver to install the three-in-one fitting into the pre-reserved plastic slots as shown in the upper diagram.

**2:** Complete the first step as shown in the following diagram.

**3:** Use a hammer to install the wooden plugs into the corresponding slots of the other board.

**4:** Align the two boards to be joined together as shown in the upper diagram.

**5:** Use a screwdriver to insert and tighten the three-in-one fitting into the holes as shown in the diagram above.

**6:** Completion.

## Drawer Slide Installation Steps:



**1:** Take out the drawer slides.



**2:** Extend the thinnest slide, and when the structure shown in the diagram is exposed, press down firmly.



**3:** Continue pulling out the drawer slide.



**4:** Separate the drawer slide into its individual parts.



**5:** Install the removed drawer slide on the drawer side panel, paying attention to the orientation and the positions of the screw holes.

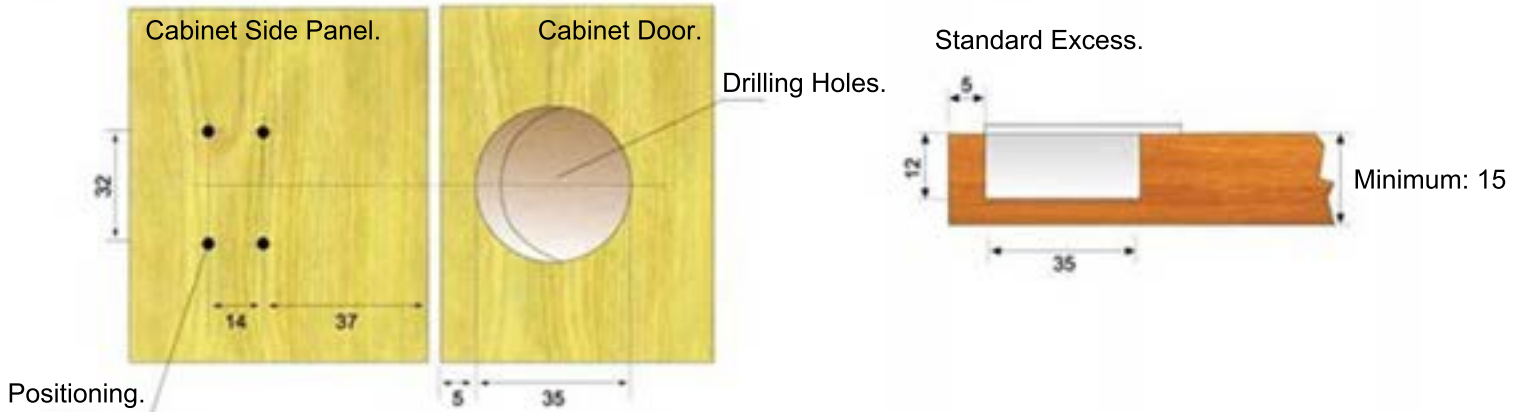


**6:** Install the other drawer slides in their respective positions one by one, ensuring the correct orientation and alignment with the screw holes.

# Screw Installation Steps:

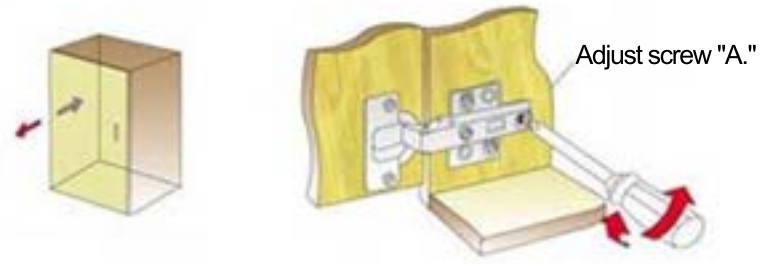
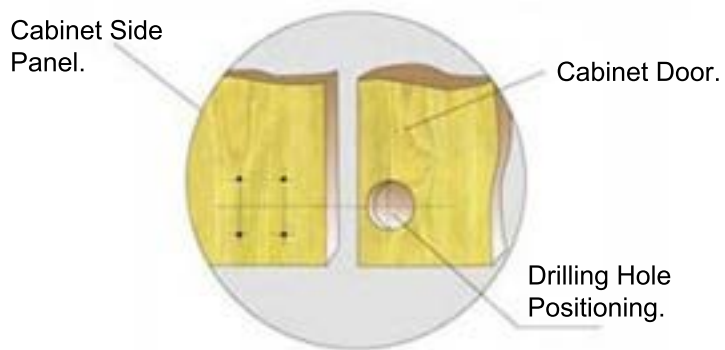
## Screw Hole Positioning Method:

The screw hole positions are determined based on the specific hinges.

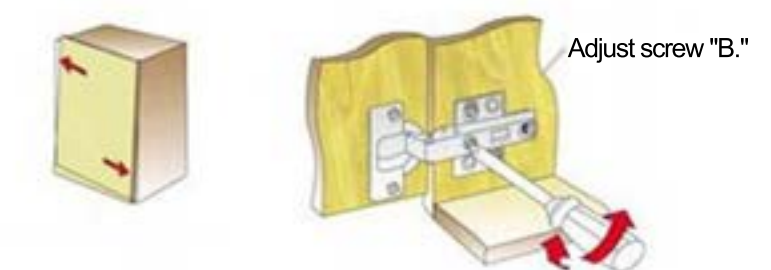
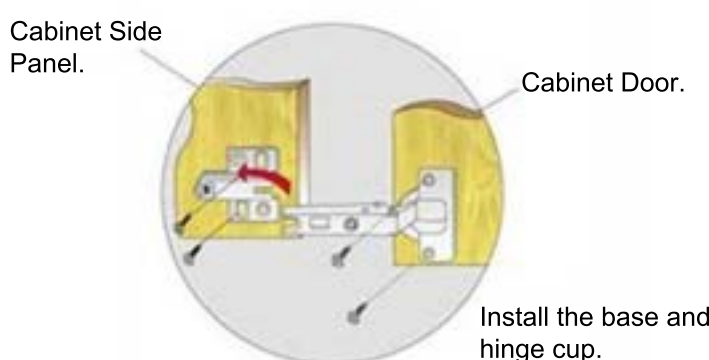


For non-removable hinges, do not separate the base and the main body during installation.

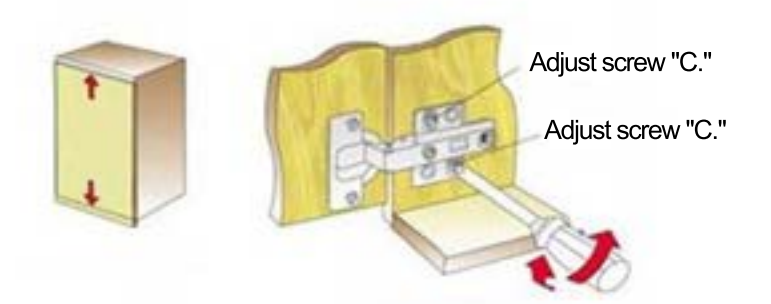
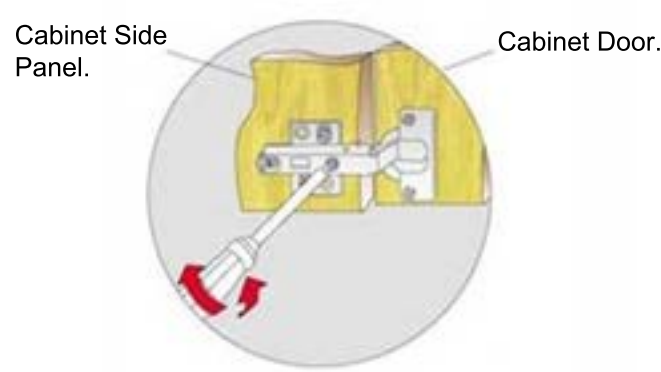
Illustration of Three-Dimensional Adjustment of Cabinet Doors:



Before and After Three-Dimensional Adjustment: Simply adjust screw "A" to change the gap between the door panel and the cabinet body.



Left-Right Adjustment in Three Dimensions: Adjust screw "B" to change the overlap of the door panel relative to the cabinet body. Adjust screw "B."



Vertical Adjustment in Three Dimensions: Adjust screw "C" on the hinge base plate to correct the vertical alignment and top-bottom gap of the door panel. Adjust screw "C."